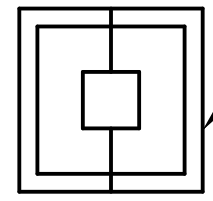
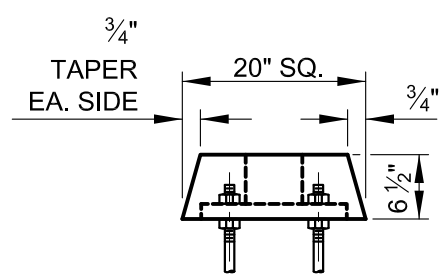


BASE PLATE DETAILS



TWO-PIECE BASE COVER WITH FLUSH FASTENERS, FINISH TO MATCH POLE.



BASE COVER DETAILS



APPROVED:
Primal Devita
 DIVISION CHIEF, TRANSPORTATION ENGINEERING AND CONSTRUCTION
Khalil Zare
 DIRECTOR, DEPARTMENT OF TRANSPORTATION

CITY OF BALTIMORE
 DEPARTMENT OF TRANSPORTATION
 TRANSPORTATION ENGINEERING AND CONSTRUCTION

**INNER HARBOR TYPE
 SQUARE STEEL POLES &
 MAST ARMS**

ISSUED	REVISED	REVISED
8 / 2010		
STANDARD NO. BC 880.09-1		
SCALE : NONE	SHEET 1 OF 4	