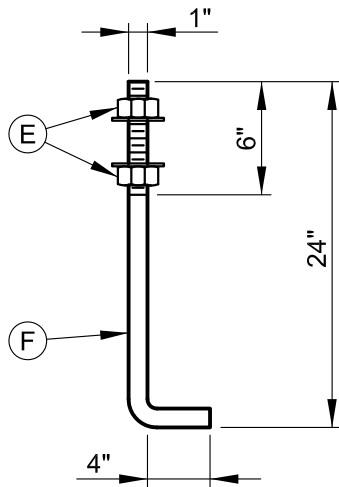
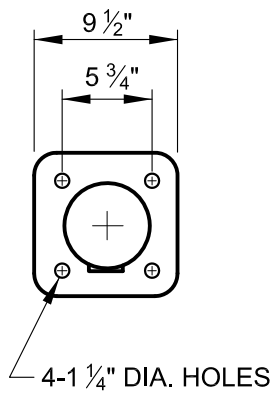
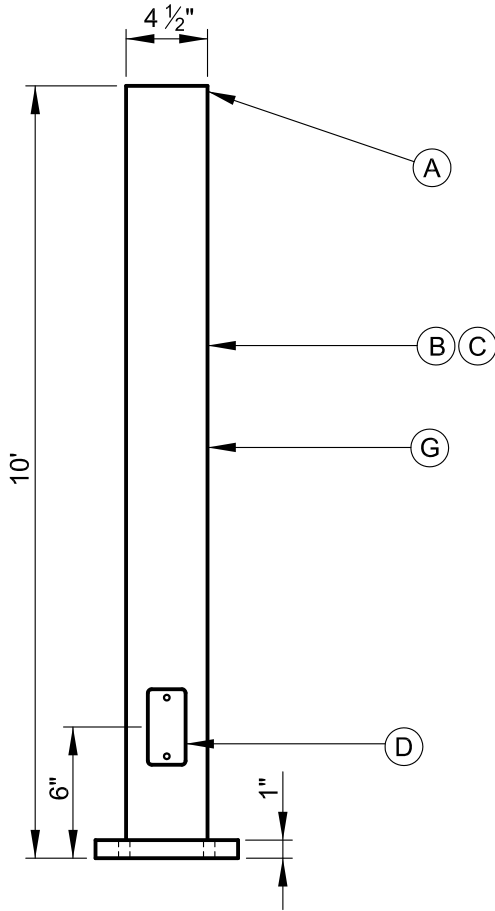
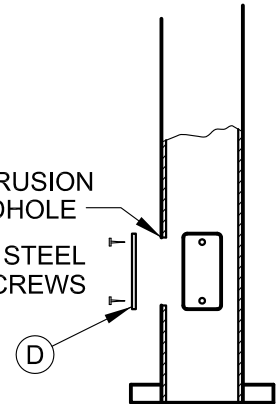


**REQUIREMENTS**

- (A) ROUND 4" DIAMETER STANDARD PIPE SIZE (4 1/2" O.D. x .237" WALL THICKNESS)
- (B) ROUND STRAIGHT STEEL SHAFT
- (C) SHAFT TO BE SCHEDULE 40 PIPE
- (D) MINIMUM SIZE 3" x 5" REINFORCED HANDHOLE AND COVER PLATE WITH ROUNDED CORNERS. MAXIMUM 3/8" PROTRUSION AROUND HANDHOLE.
- (E) (8) - 1" GALVANIZED, HEX NUTS AND FLAT WASHERS REQUIRED PER POLE
- (F) (4) - 1" GALVANIZED ANCHOR BOLTS REQUIRED PER POLE
- (G) FINISH TO BE GALVANIZED OR BRONZE AS SPECIFIED



MAX. 3/8" PROTRUSION AROUND HANDHOLE  
 STAINLESS STEEL TYPE 304 SCREWS



**HANDHOLE DETAIL**

NOTE: A 3/8" POLE GROUNDING LUG SHALL BE PROVIDED AT THE HANDHOLE.



APPROVED:  
*Primal Devita*  
 DIVISION CHIEF, TRANSPORTATION ENGINEERING AND CONSTRUCTION  
*Khalil Zare*  
 DIRECTOR, DEPARTMENT OF TRANSPORTATION

CITY OF BALTIMORE  
 DEPARTMENT OF TRANSPORTATION  
 TRANSPORTATION ENGINEERING AND CONSTRUCTION

**STEEL PEDESTAL POLE**

ISSUED	REVISED	REVISED
8 / 2010		
<b>STANDARD NO.</b>		
<b>BC 880.08</b>		
SCALE : NONE	SHEET 1 OF 1	