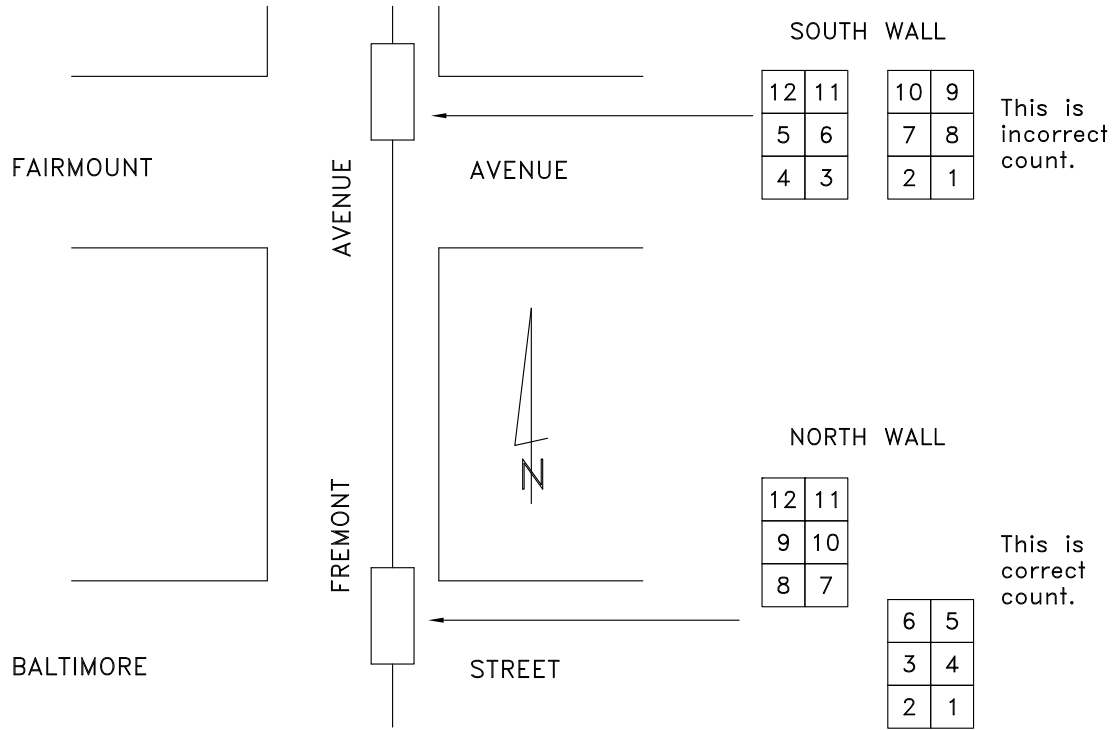
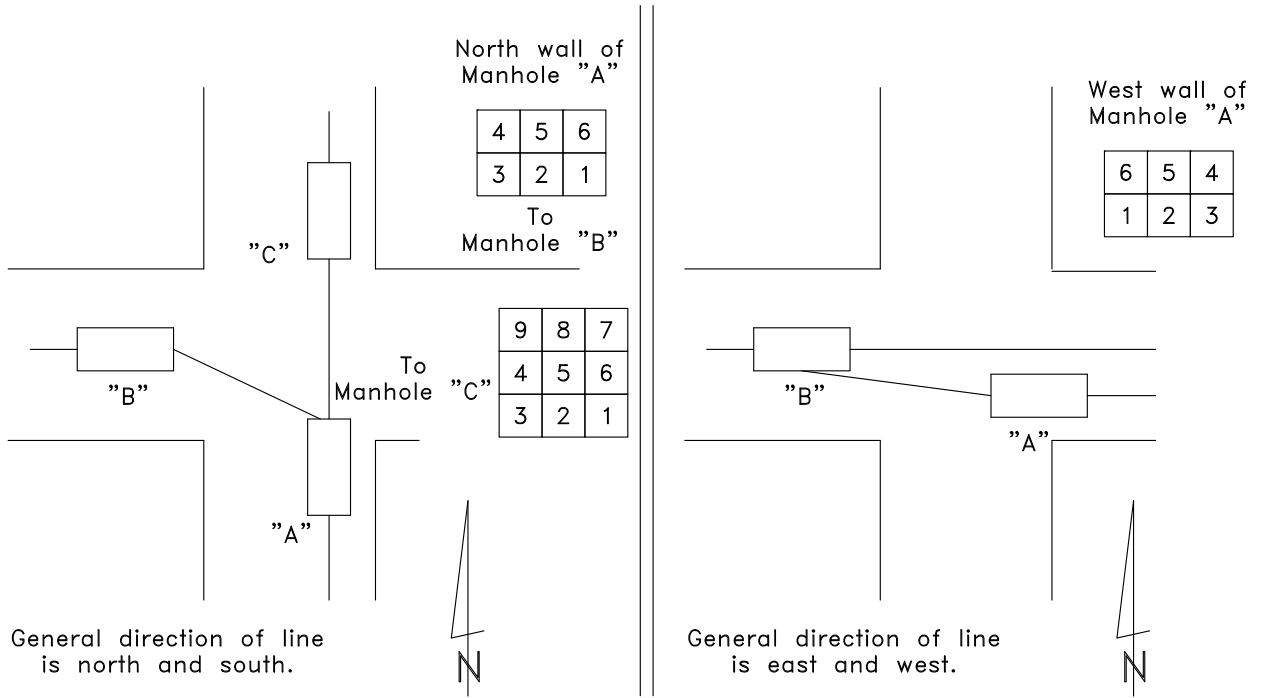



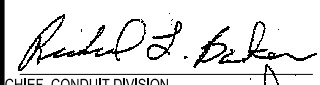
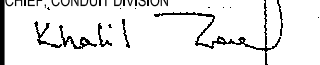
DUCT IDENTIFICATION

The following example illustrates the need for adhering to the above rules to avoid confusion due to changes in duct formation.



C. When a duct line leaves a manhole on either a north or south wall and enters a connecting manhole on the east or west wall, the general direction of the duct line shall be the deciding factor in determining the duct count.



| | | | | | |
|---|--|--|----------------------------|--|---------|
|  | APPROVED:  | CITY OF BALTIMORE DEPARTMENT OF TRANSPORTATION CONDUIT DIVISION | ISSUED 8 / 2010 | REVISED | REVISED |
| | CHIEF, CONDUIT DIVISION  | DIRECTOR, DEPARTMENT OF TRANSPORTATION | DUCT IDENTIFICATION | STANDARD NO. BC 830.01- 3 | |
| | | | SCALE : NONE | SHEET 3 OF 6 | |