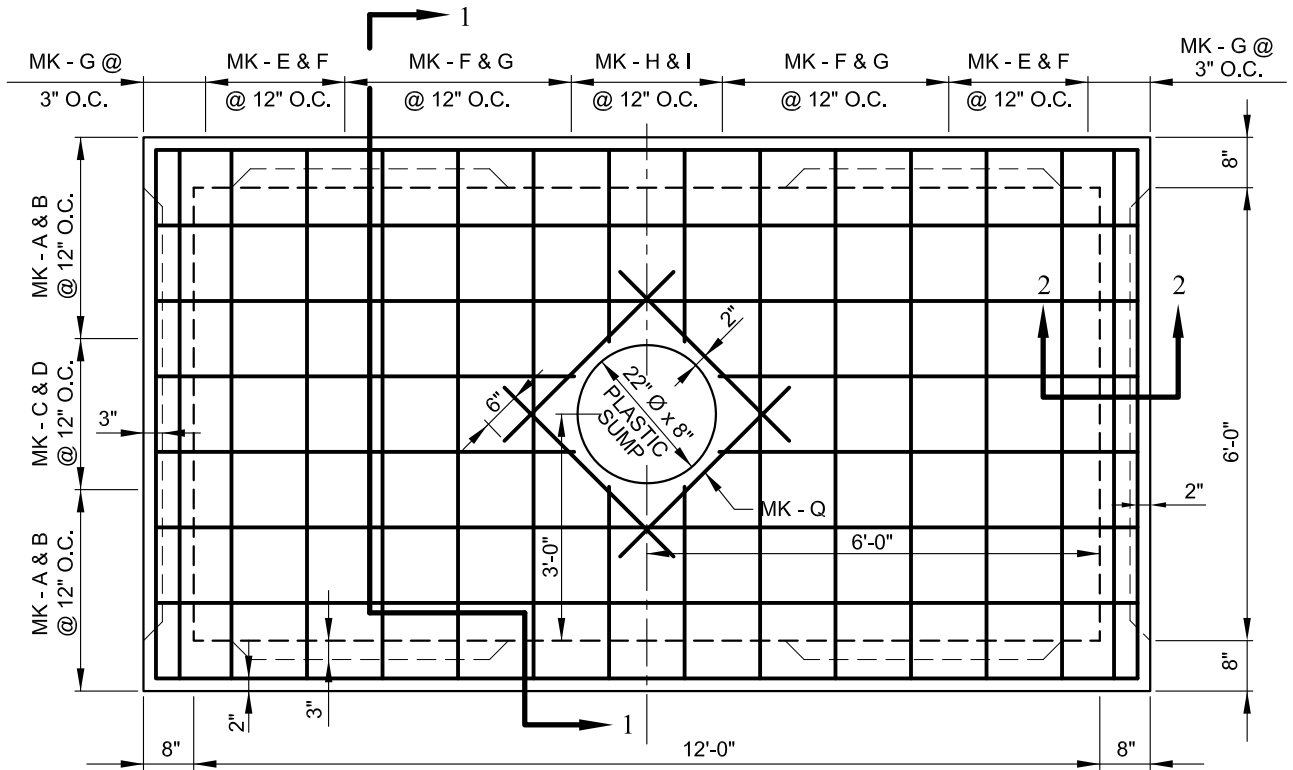
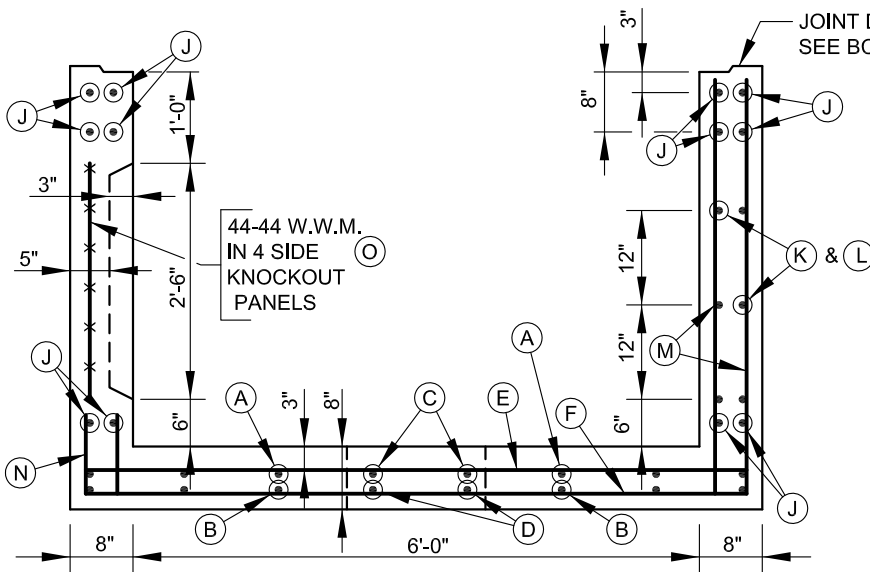


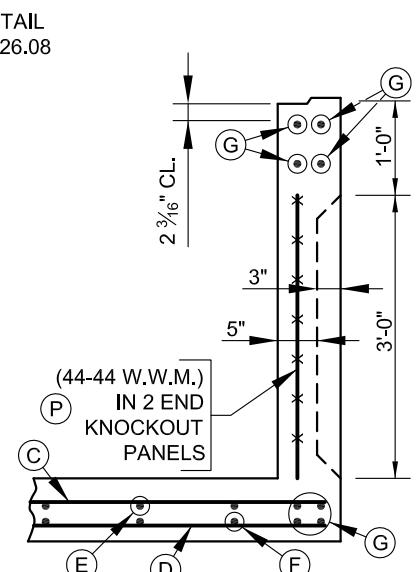
NOTE: ALTERNATE DESIGNS ON HS-20-44 LOADING WITH 1' TO 3' COVER WILL BE ACCEPTABLE



PLAN - BOTTOM HALF



SECTION 1-1


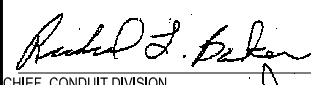
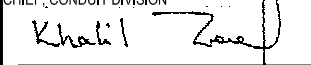


SECTION 2-2

TOP HALF (6' x 12' x 8' MANHOLE) SEE BC 826.02-1
 BAR SCHEDULE (6' x 12' x 8' MANHOLE) SEE BC 826.04
 KNOCKOUT DETAILS SEE BC 826.05
 INSERTS FOR RECESSED EXTENSION SEE BC 826.06
 ACCESSORIES FOR PRECAST MANHOLES SEE BC 826.08
 STANDARD ACCESS STACK SEE BC 825.11
 PRECAST RECESSED EXTENSION SEE BC 826.07-1

GENERAL NOTES

SPECIFICATIONS ----- LATEST DEPARTMENT OF GENERAL SERVICES
 CONCRETE ----- $f'_c = 5,000$ PSI - MIX AS APPROVED BY ENGR.
 REINFORCING ----- ASTM A615, GRADE 60
 WELDED WIRE MESH --- ASTM A185
 LOADING ----- HS 25 TRUCK LOADING

	APPROVED:  CHIEF, CONDUIT DIVISION  DIRECTOR, DEPARTMENT OF TRANSPORTATION	CITY OF BALTIMORE DEPARTMENT OF TRANSPORTATION CONDUIT DIVISION	ISSUED 8 / 2010	REVISED	REVISED
	PRECAST LINE MANHOLE 6' x 12' x 8' HEADROOM BOTTOM HALF	STANDARD NO. BC 826.02-2		SCALE : NONE	SHEET 2 OF 2