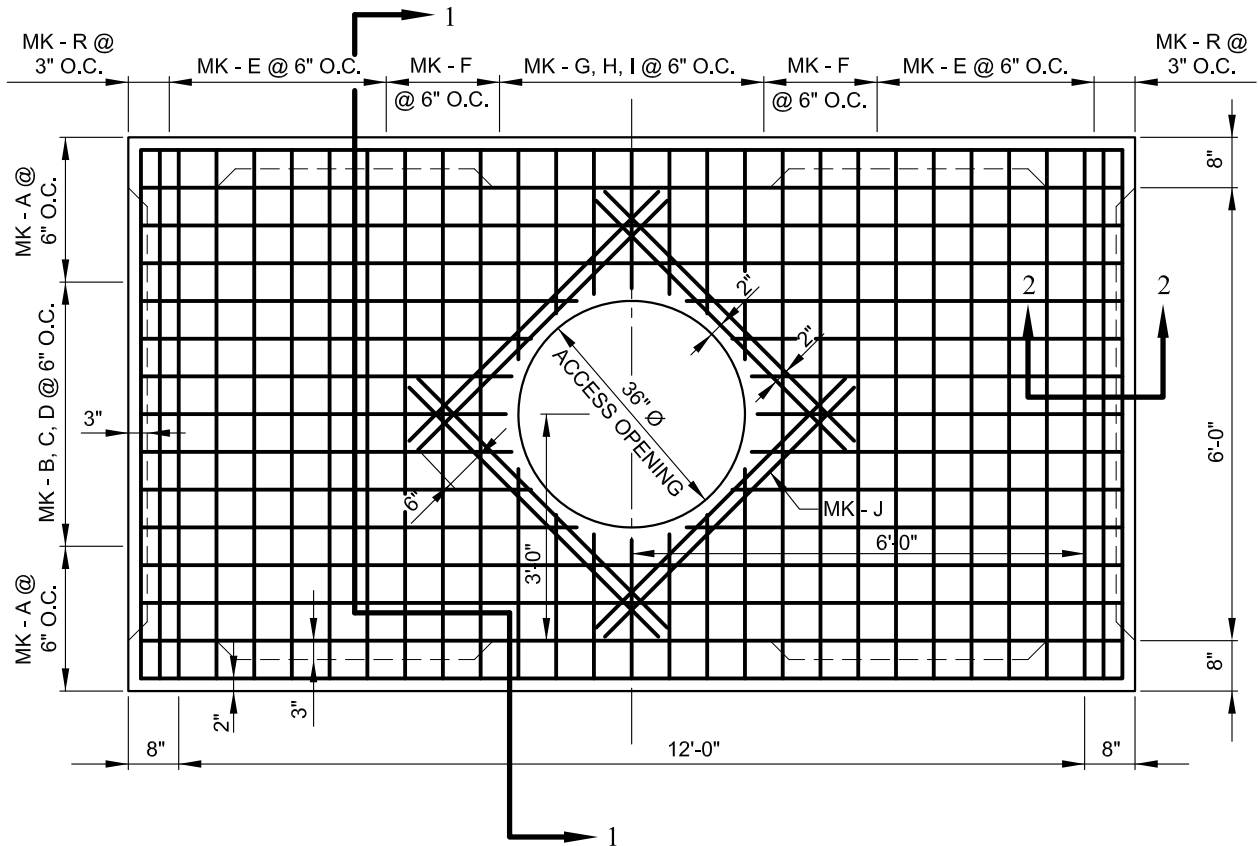
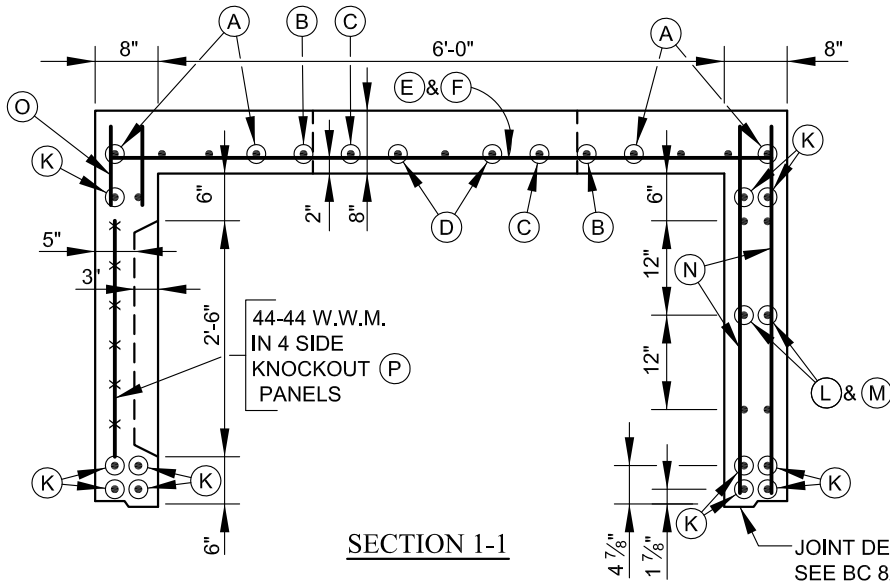


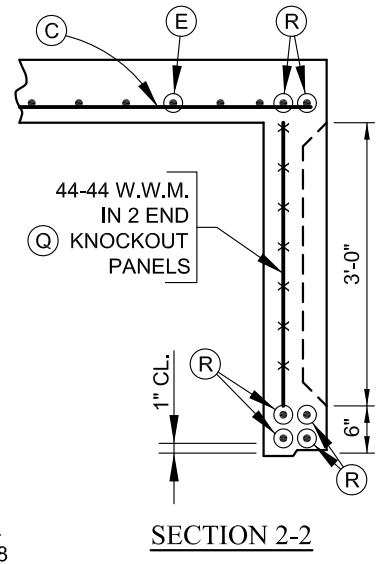
NOTE: ALTERNATE DESIGNS ON HS-20-44 LOADING WITH 1' TO 3' COVER WILL BE ACCEPTABLE



PLAN - TOP HALF



SECTION 1-1



SECTION 2-2

BOTTOM HALF (6' x 12' x 7' MANHOLE) SEE BC 826.01-2  
 BAR SCHEDULE (6' x 12' x 7' MANHOLE) SEE BC 826.04  
 KNOCKOUT DETAILS SEE BC 826.05  
 INSERTS FOR RECESSED EXTENSION SEE BC 826.06  
 ACCESSORIES FOR PRECAST MANHOLES SEE BC 826.08  
 STANDARD ACCESS STACK SEE BC 825.11  
 PRECAST RECESSED EXTENSION SEE BC 826.07-1

GENERAL NOTES

SPECIFICATIONS ----- LATEST DEPARTMENT OF GENERAL SERVICES  
 CONCRETE -----  $f'_c = 5,000$  PSI - MIX AS APPROVED BY ENGR.  
 REINFORCING ----- ASTM A615, GRADE 60  
 WELDED WIRE MESH --- ASTM A185  
 LOADING ----- HS 25 TRUCK LOADING



APPROVED:  
*Ronald J. Baker*  
 CHIEF, CONDUIT DIVISION  
*Khalil Zane*  
 DIRECTOR, DEPARTMENT OF TRANSPORTATION

CITY OF BALTIMORE  
 DEPARTMENT OF TRANSPORTATION  
 CONDUIT DIVISION

PRECAST LINE MANHOLE  
 6' x 12' x 7' HEADROOM  
 TOP HALF

ISSUED	REVISED	REVISED
8 / 2010		
STANDARD NO. BC 826.01-1		
SCALE : NONE	SHEET 1 OF 2	