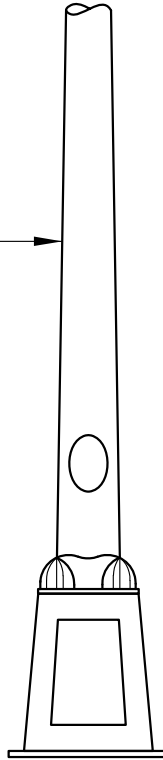
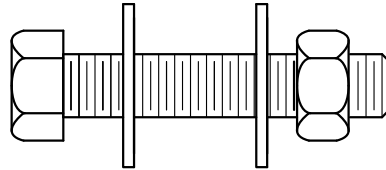


FOR POLE DETAILS
SEE BC 808.02-2

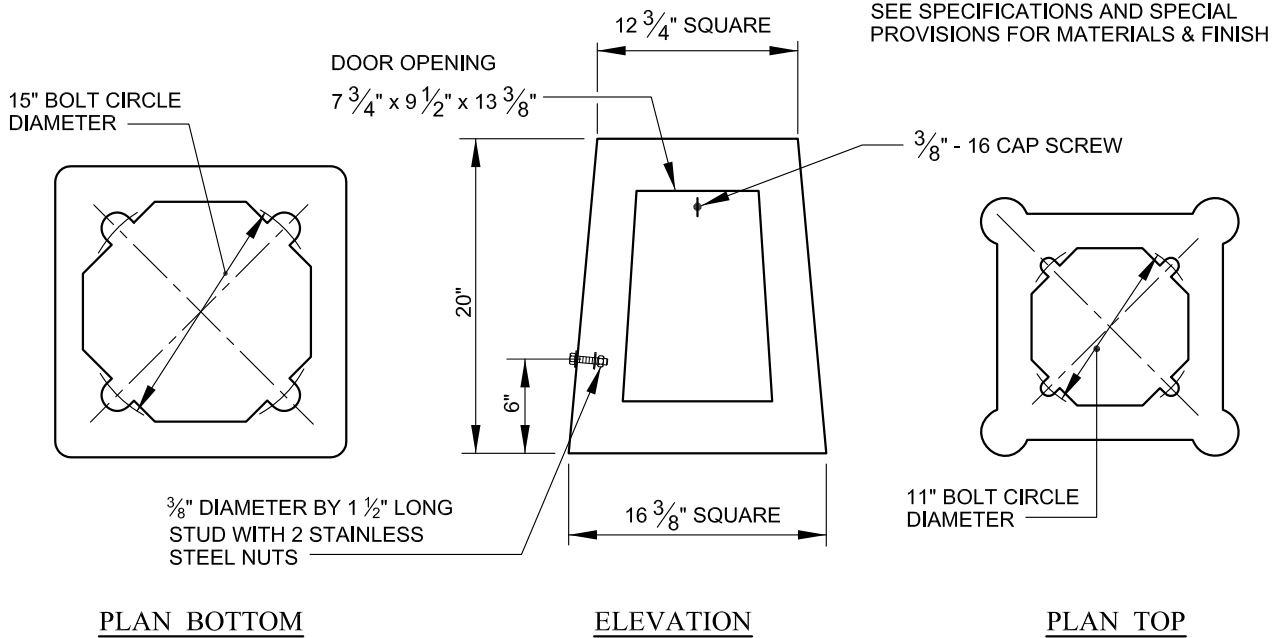


FOR ANCHOR BOLT DETAILS,
SEE BC 808.08

FOR POLE ATTACHMENT BOLT DETAILS
SEE BELOW



STAINLESS STEEL BOLT AND NUT
NC-8 THREAD 1" x 3" WITH TWO
STAINLESS STEEL WASHERS 1 1/16"



PERMANENT MOLD ALUMINUM TRANSFORMER BASES



APPROVED:
Primal Dev...
DIVISION CHIEF, TRANSPORTATION ENGINEERING
AND CONSTRUCTION
Khalil Z...
DIRECTOR, DEPARTMENT OF TRANSPORTATION

CITY OF BALTIMORE
DEPARTMENT OF TRANSPORTATION
TRANSPORTATION ENGINEERING AND
CONSTRUCTION

**TYPICAL
TRANSFORMER BASES**

ISSUED	REVISED	REVISED
8 / 2010		
STANDARD NO. BC 818.13		
SCALE : NONE	SHEET 1 OF 1	