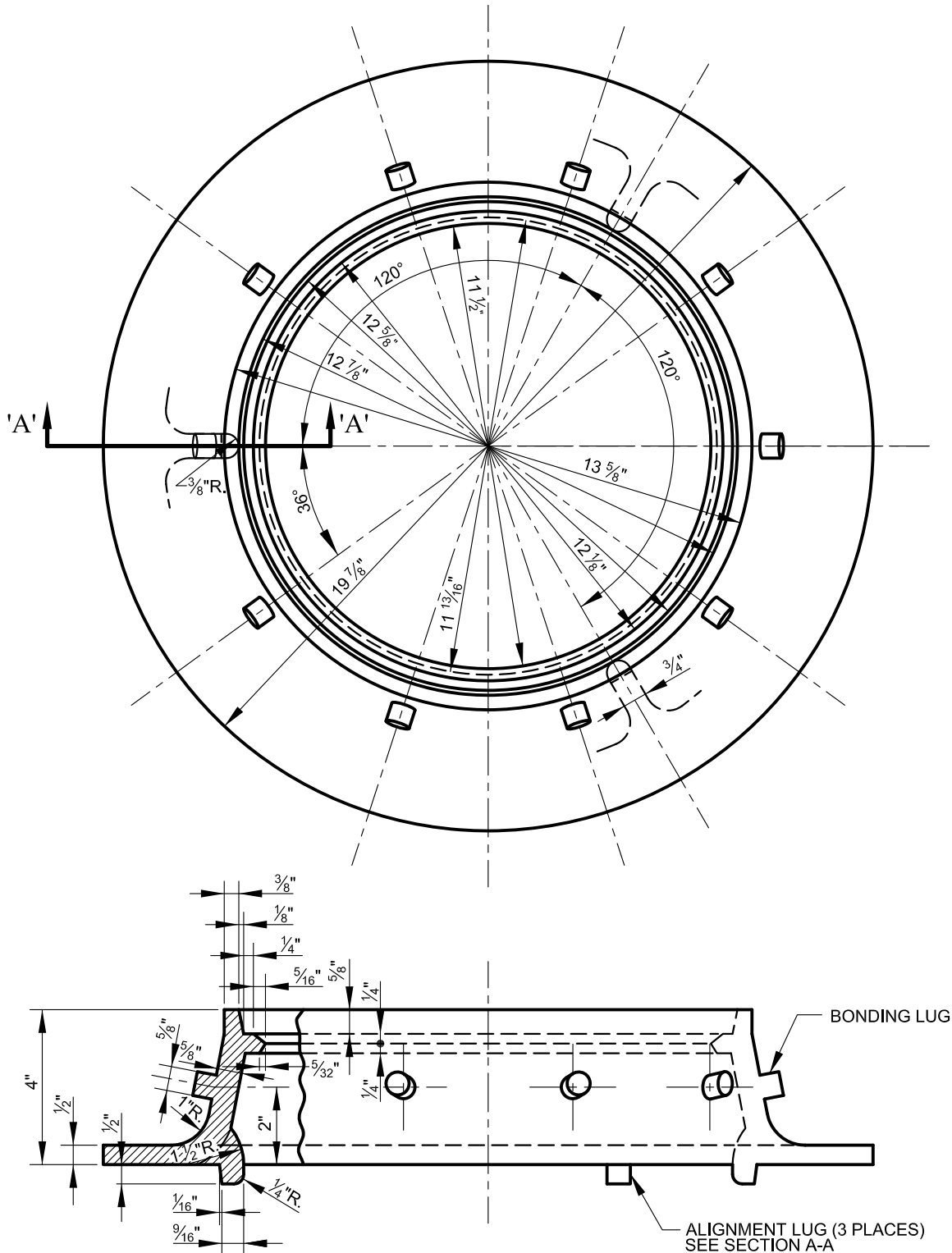

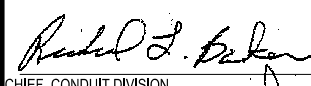
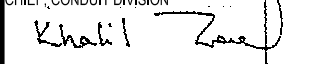


NOTE: MATERIAL SHALL BE CAST
IRON 21,000 PSI
TENSILE STRENGTH



A-A ELEVATION & SECTION

NOTE:
AVERAGE WEIGHT OF FRAME 57.75 LBS.

	APPROVED:  CHIEF, CONDUIT DIVISION	CITY OF BALTIMORE DEPARTMENT OF TRANSPORTATION CONDUIT DIVISION	ISSUED	REVISED	REVISED
	 DIRECTOR, DEPARTMENT OF TRANSPORTATION		8 / 2010		
HANDBOX - CONDUIT STANDARD FRAME			STANDARD NO. BC 804.03		
			SCALE : NONE	SHEET 1 OF 1	