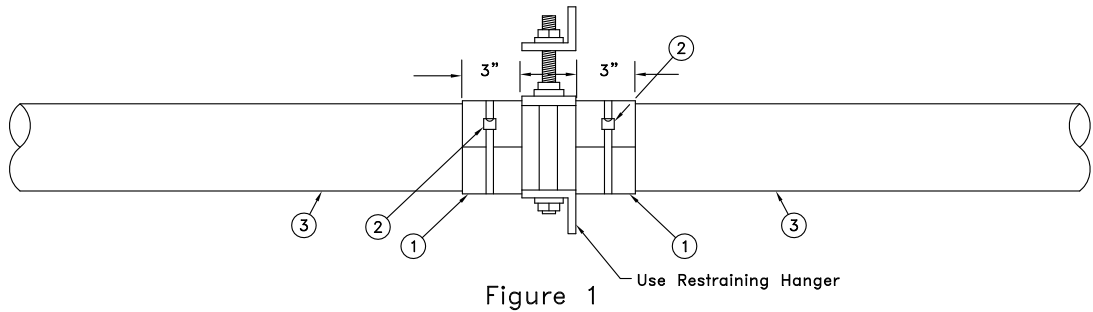


5" PVC PLASTIC UTILITY DUCT ON BRIDGES STOP RING INSTALLATION AND DUCT TERMINATION

Typical Stop Ring Installation

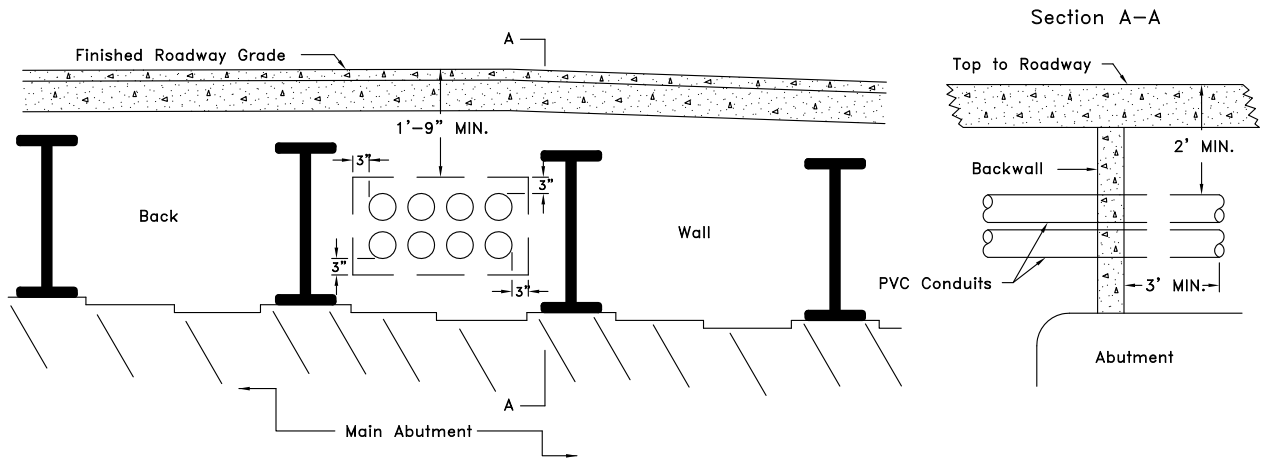
- (A) Apply cement around duct (3-inch wide band) on each side of hanger.
- (B) Immediately slide sleeve-type split stop rings over cemented areas, place firmly against hanger and secure in place with plastic duct ties. (See Figure 1)



Bill of Material

Item	Description	Quantity
1	5" x 3" Schedule 40 PVC, sleeve-type split stop ring	2
2	20" Plastic duct tie (self-clinching)	2
3	5" Schedule 40 PVC duct	As Req'd.

Duct Termination at Bridge Abutment



Conduits shall exit from the bridge thru the backwall which is located on top of the main abutment. The opening in the wall to be 6" larger horizontally and vertically than the conduit configuration. The opening around the conduits shall be sealed with a watertight cement grout.



APPROVED:
Richard S. Baker
 CHIEF, CONDUIT DIVISION
Khail Zare
 DIRECTOR, DEPARTMENT OF TRANSPORTATION

CITY OF BALTIMORE
DEPARTMENT OF TRANSPORTATION
CONDUIT DIVISION

**5" PVC, PLASTIC UTILITY DUCT ON
 BRIDGE STOP RING INSTALLATION
 AND DUCT TERMINATION**

ISSUED	REVISED	REVISED
8 / 2010		
STANDARD NO. BC 802.04-6		
SCALE: NONE	SHEET 6 OF 6	