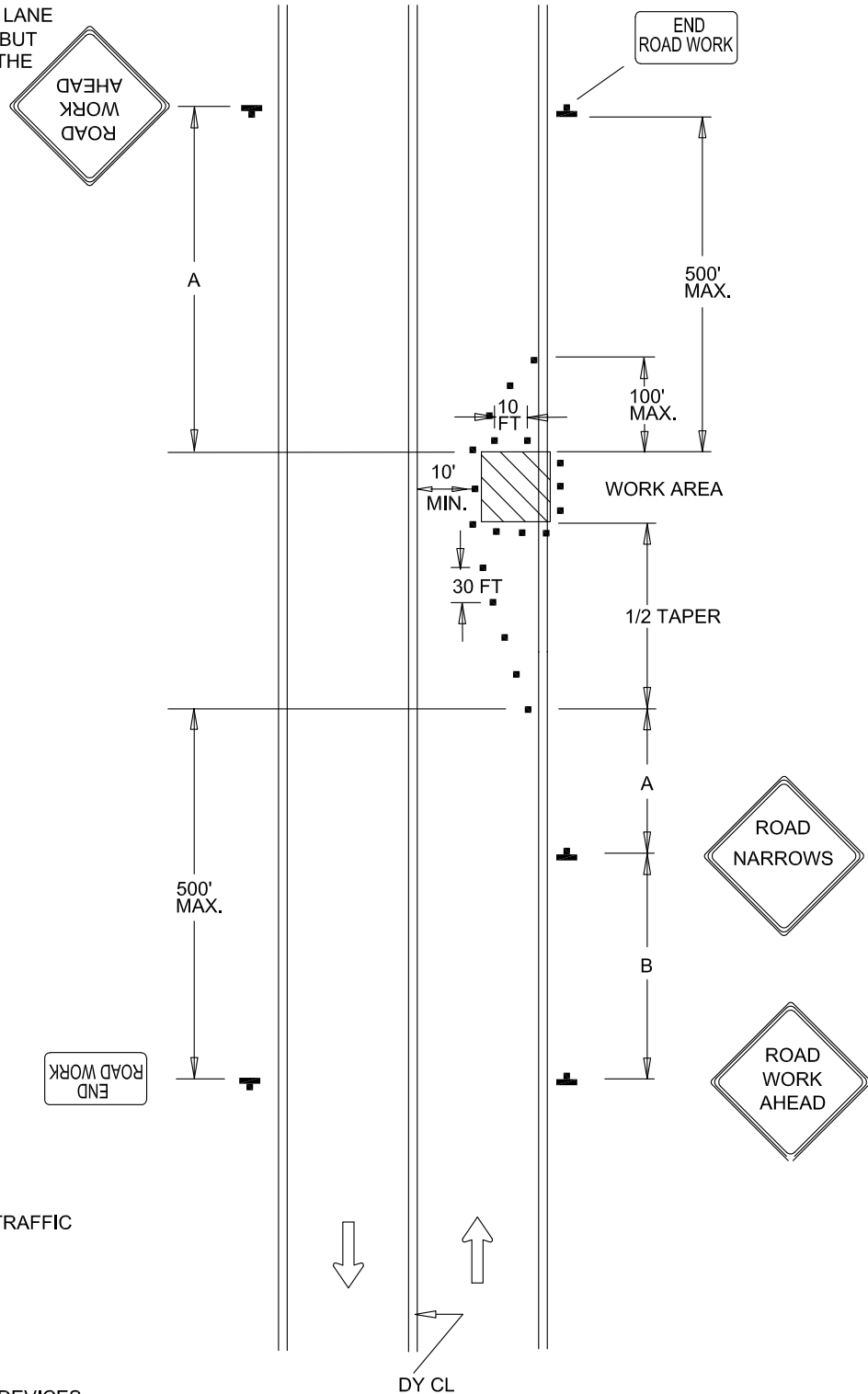


NOTED

REFER TO BC 104.01-4 FOR SIGN SPACING, TAPER AND BUFFER LENGTHS

THIS FIGURE SHOULD BE USED WHERE PARKING AREAS ADJACENT TO TRAVEL LANES ARE CLOSED.

THIS FIGURE APPLIES ONLY TO SITUATIONS WHERE LANE WIDTHS ARE REDUCED BUT NOT SHIFTED ACROSS THE EXISTING CENTERLINE.



NOTED

- DIRECTION OF TRAFFIC
- SIGN
- WORK SITE
- CHANNELIZING DEVICES



APPROVED:
Frank Murphy
 DEPUTY DIRECTOR - OPERATIONS
Khalil Zane
 DIRECTOR, DEPARTMENT OF TRANSPORTATION

CITY OF BALTIMORE
DEPARTMENT OF TRANSPORTATION
TRAFFIC DIVISION

TRAFFIC CONTROL FOR PARTIAL LANE CLOSURE

ISSUED	REVISED	REVISED
8 / 2010		
STANDARD NO. BC 112.01		
SCALE : NONE	SHEET 1 OF 1	