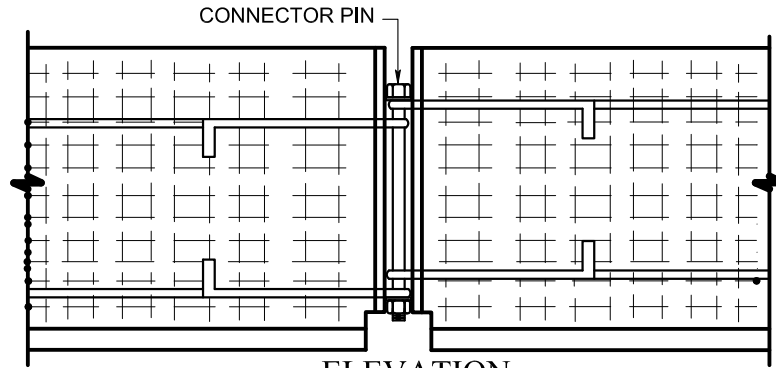


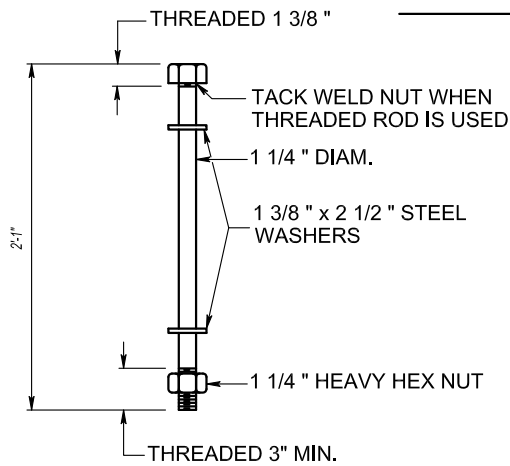
PLAN

(CONNECTOR PIN NOT SHOWN)

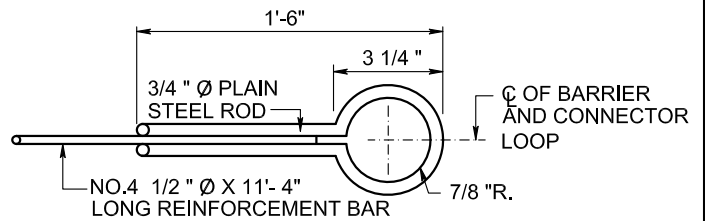


ELEVATION

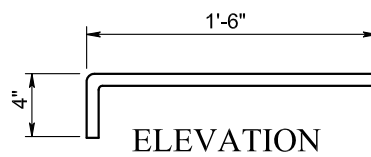
JOINT DETAILS



CONNECTOR PIN



PLAN



ELEVATION

CONNECTOR LOOP

NOTES

- 1) THE CONNECTOR PIN SHALL BE 1 1/4 " ϕ x 25" AND SHALL CONFORM TO ASTM A307, GRADE A. NUTS SHALL CONFORM TO A 563, WASHERS SHALL CONFORM TO ASTM F 436. THE CONNECTOR PIN, NUTS AND WASHERS SHALL BE PLAIN OR GALVANIZED IN ACCORDANCE WITH ASTM A 153.
- 2) CONNECTOR LOOP 3/4 " ϕ PLAIN STEEL ROD SHALL CONFORM TO ASTM A 709 GRADE 36 PLAIN OR GALVANIZED IN ACCORDANCE WITH ASTM A 153 OR STAINLESS STEEL ROD SHALL CONFORM TO ASTM A 276 FOR THE TYPE SPECIFIED.



APPROVED:

Frank Murphy

DEPUTY DIRECTOR - OPERATIONS

Khalil Zane

DIRECTOR, DEPARTMENT OF TRANSPORTATION

CITY OF BALTIMORE
DEPARTMENT OF TRANSPORTATION
TRAFFIC DIVISION

**PRECAST TEMPORARY 32" F SHAPE
CONCRETE TRAFFIC BARRIER
(PIN AND LOOP JOINT)**

ISSUED	REVISED	REVISED
8 / 2010		

STANDARD NO.
BC 104.05-1

SCALE : NONE

SHEET 2 OF 2